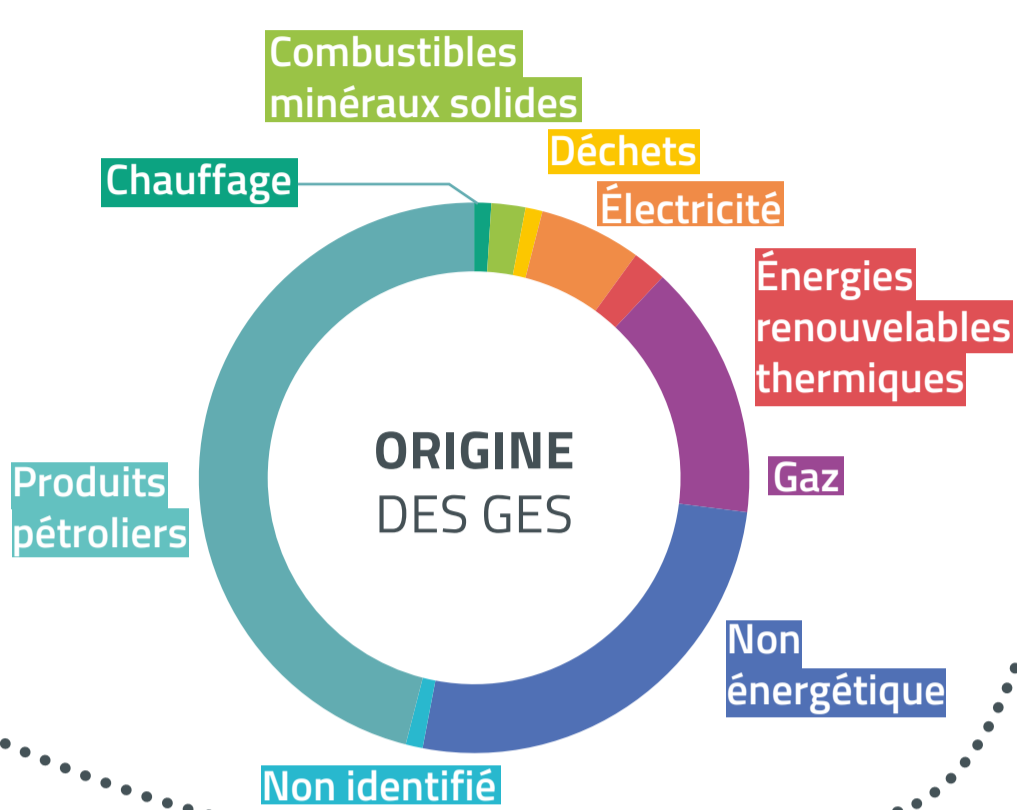
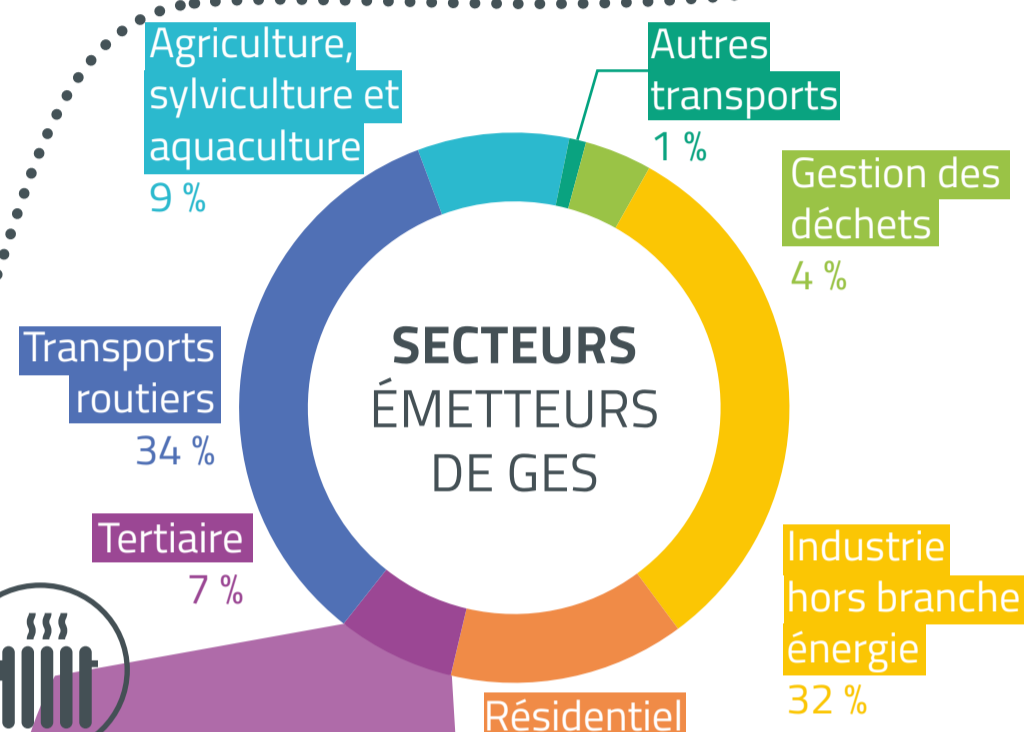


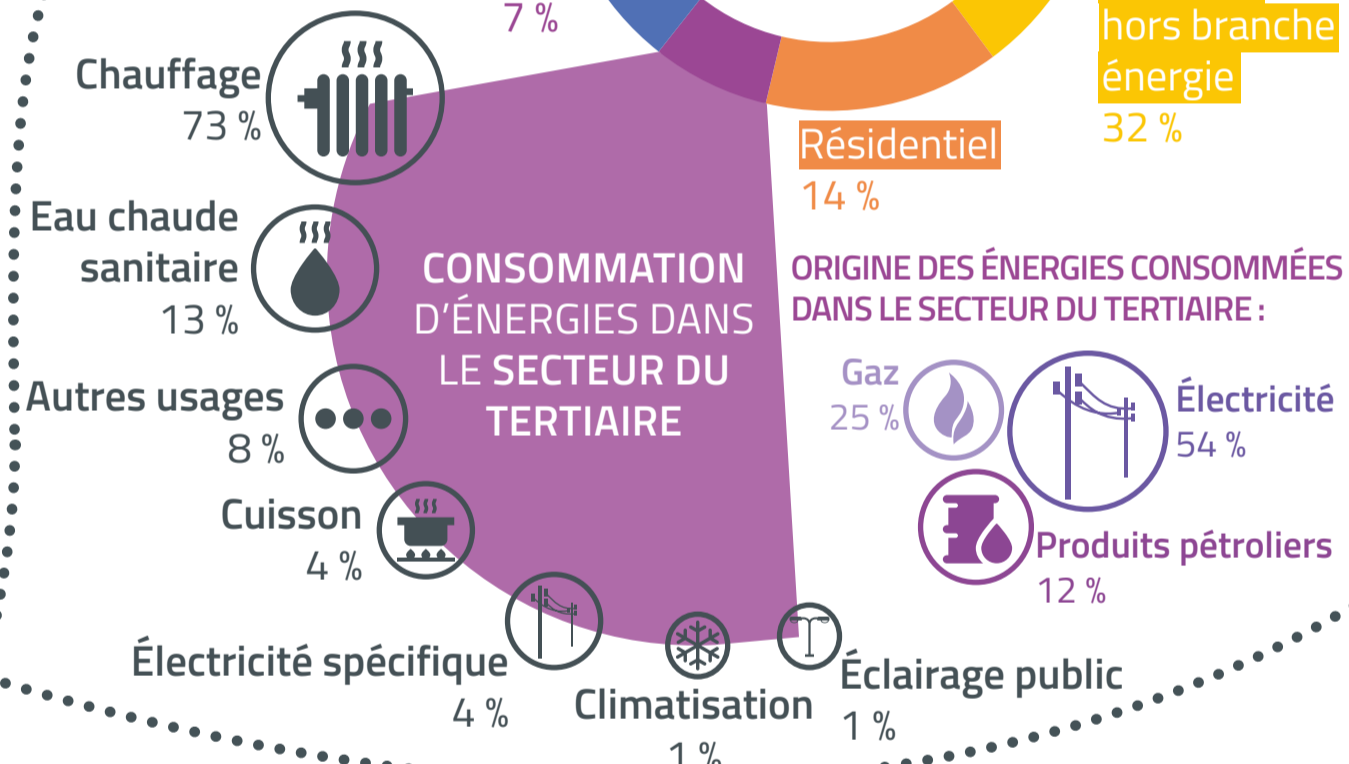
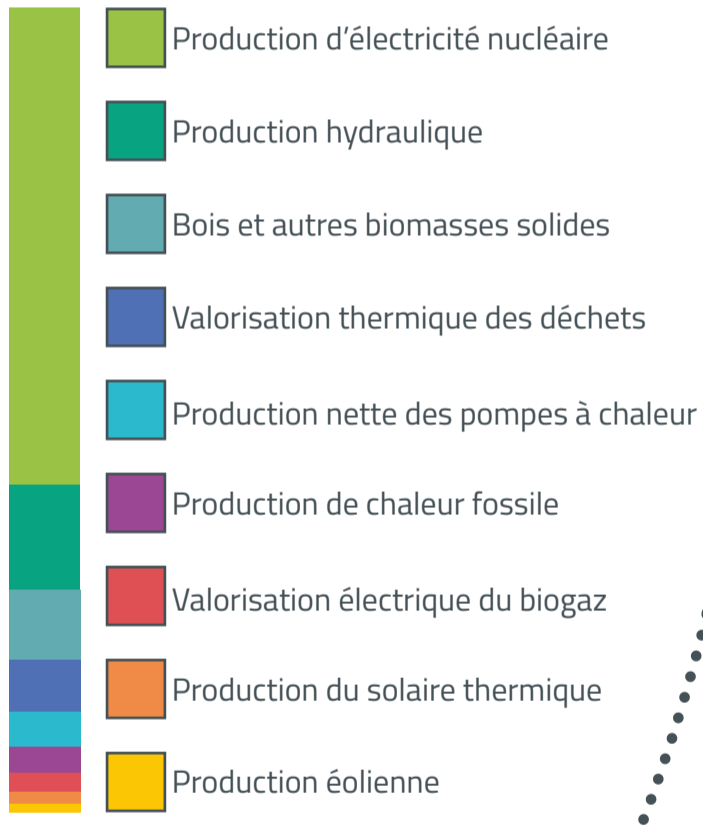
BAROMÈTRE DES ÉNERGIES EN ISÈRE



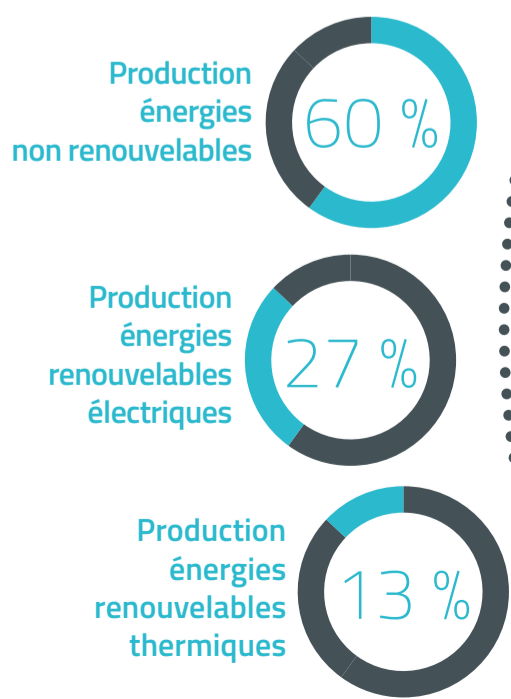
-23 %
D'ÉMISSIONS DE GAZ À EFFET DE SERRE (GES) DEPUIS 2005



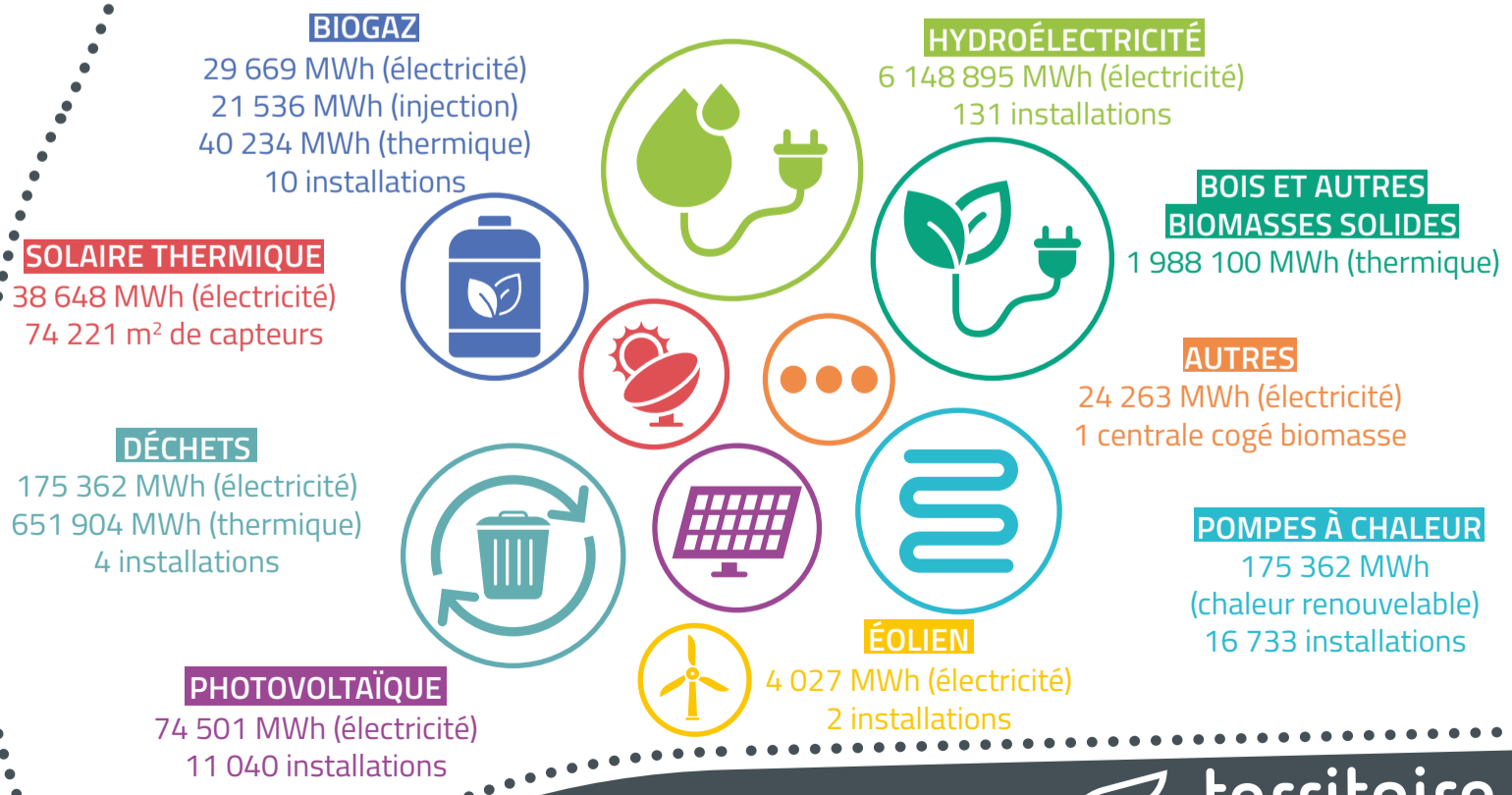
PRODUCTION D'ÉNERGIE



RÉPARTITION DE LA PRODUCTION D'ÉNERGIE



PRODUCTION D'ÉNERGIES RENOUVELABLES



SOURCE : Observatoire régional Climat Air Énergie Auvergne-Rhône-Alpes (Données 2017)