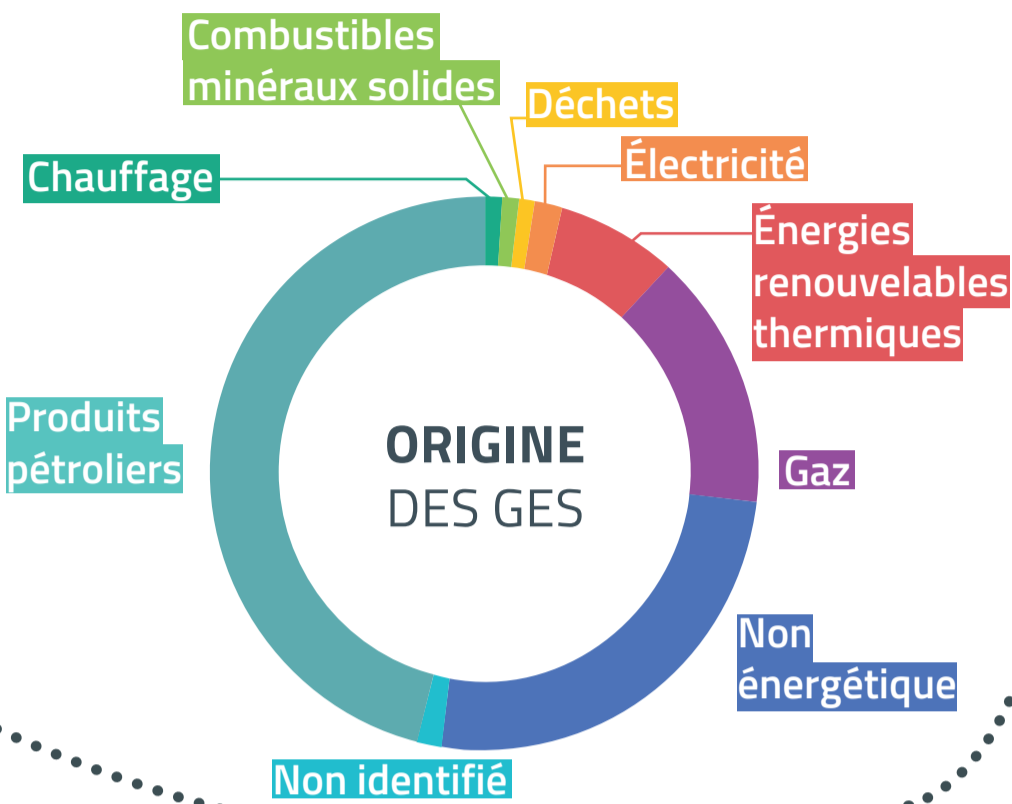
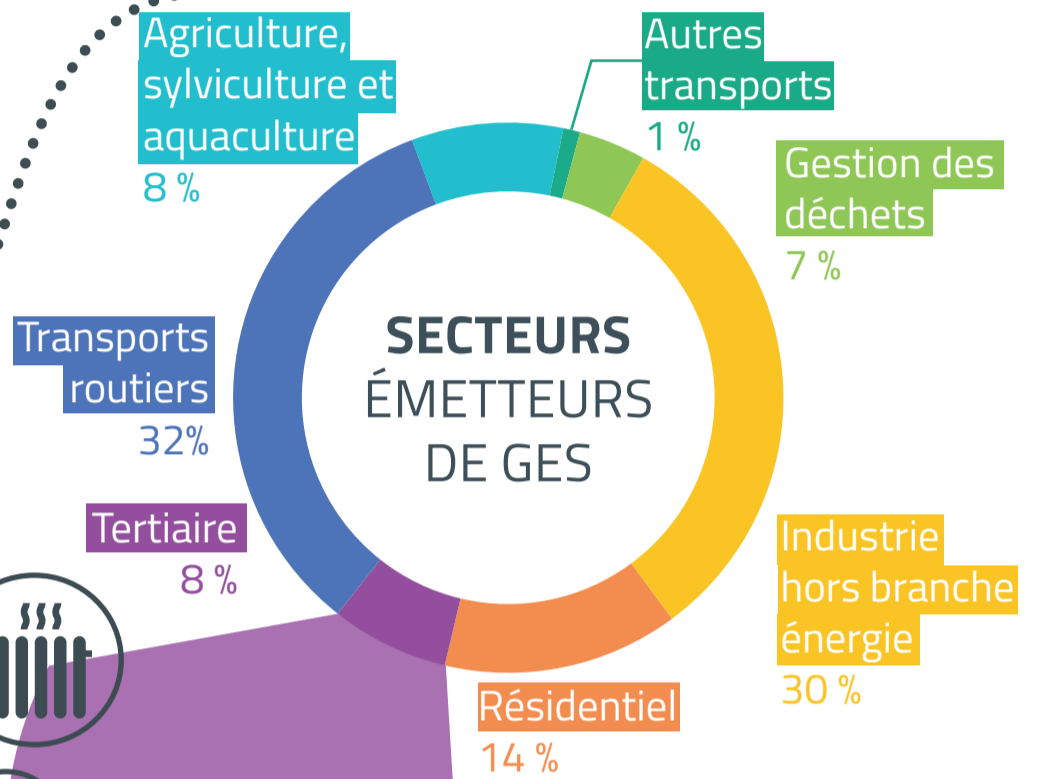


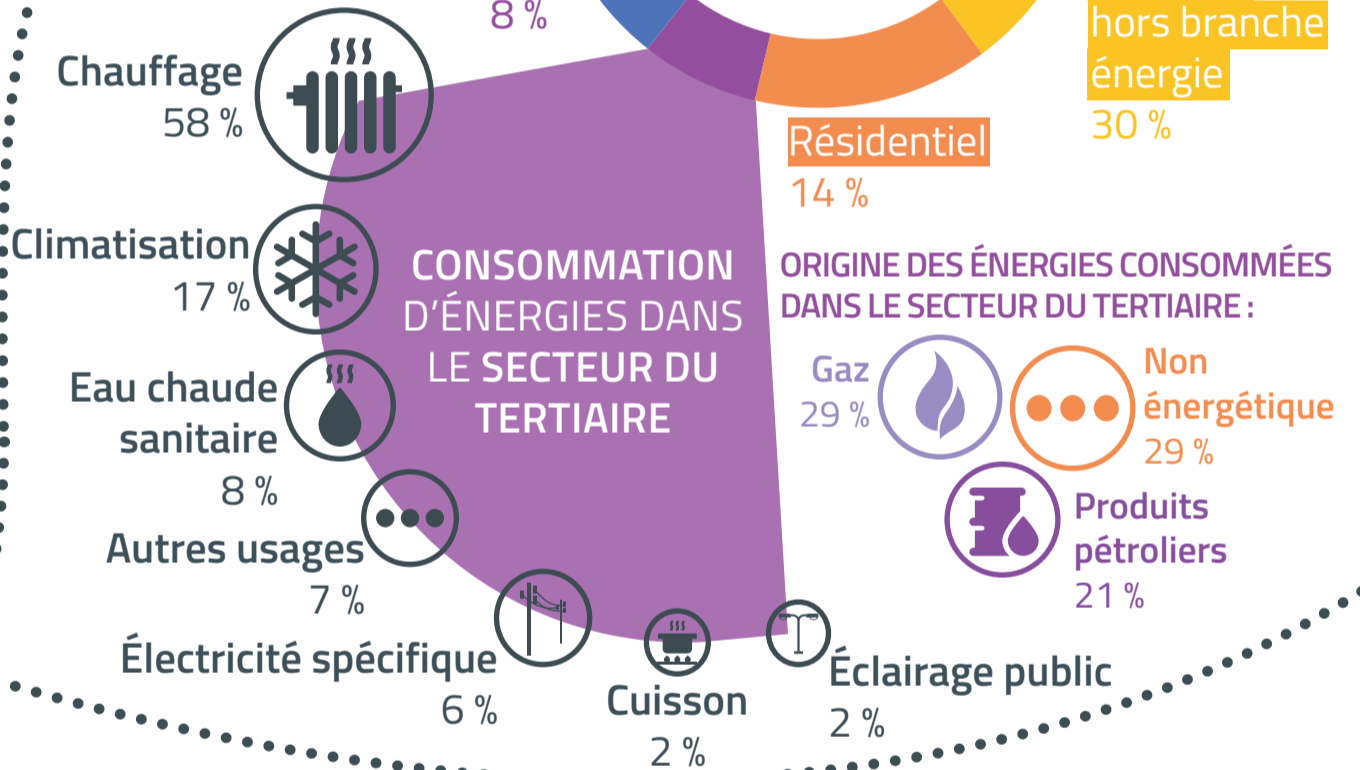
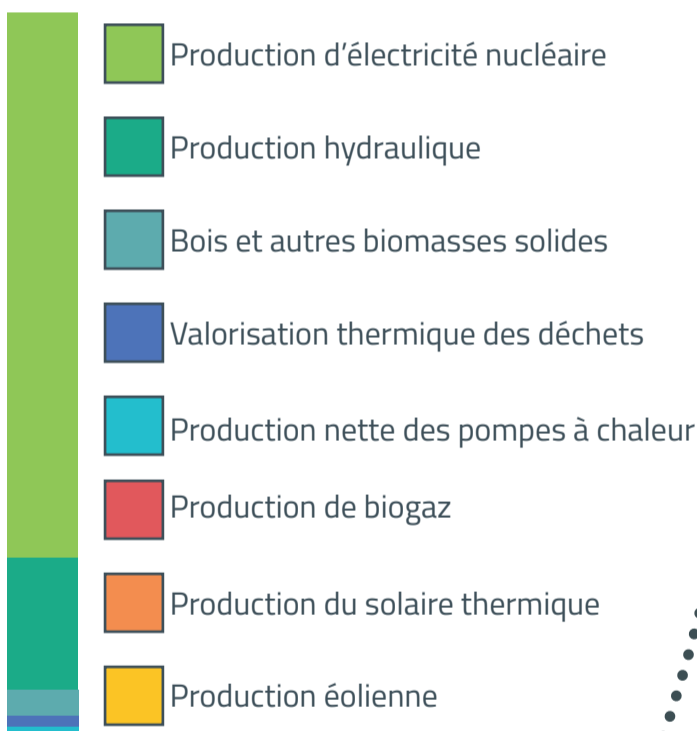
BAROMÈTRE DES ÉNERGIES EN ISÈRE



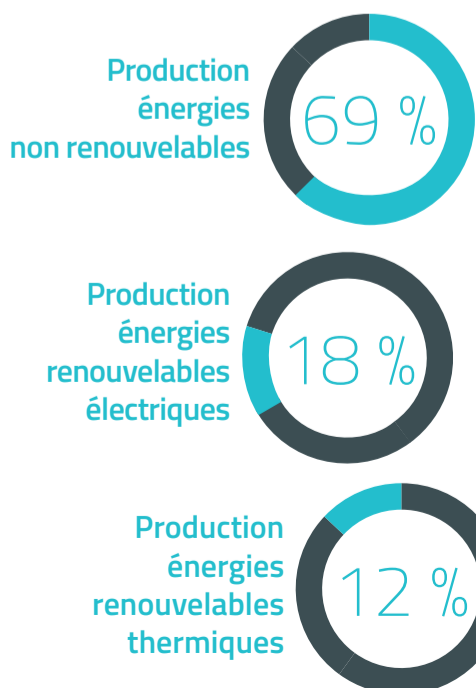
-35 %
D'ÉMISSIONS DE GAZ À EFFET DE SERRE (GES) DEPUIS 2005



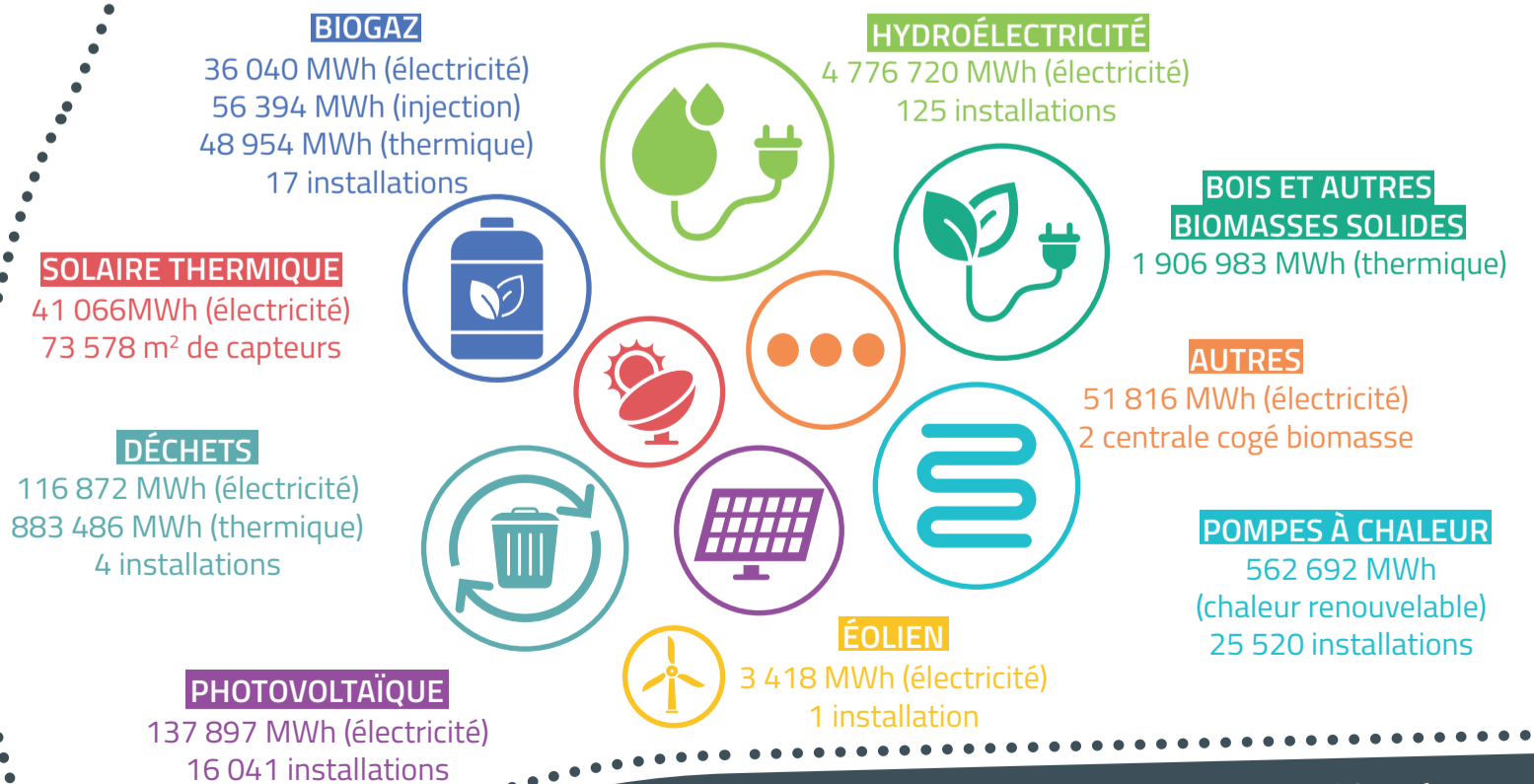
PRODUCTION D'ÉNERGIE



RÉPARTITION DE LA PRODUCTION D'ÉNERGIE



PRODUCTION D'ÉNERGIES RENOUVELABLES



SOURCE :
Observatoire régional Climat Air Énergie
Auvergne-Rhône-Alpes
(Données 2021)